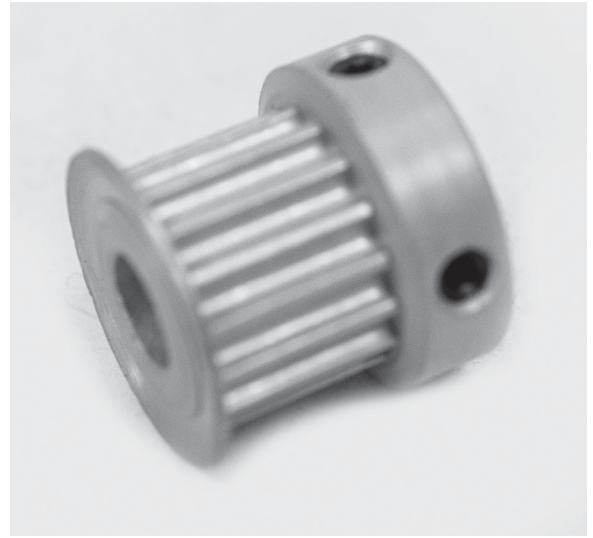


POWERHOUSE™ TIMING PULLEYS

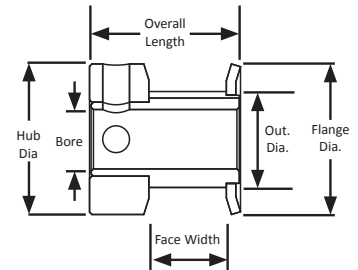
(For use with GT®2, GT®3, and FHT®-3 belts)

3 mm Pitch
For 9 mm Wide Belts
Hub and Flanges
Aluminum
Clear Anodized
Finished Bore

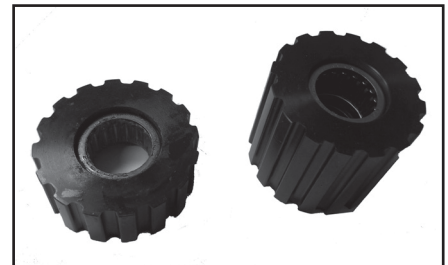
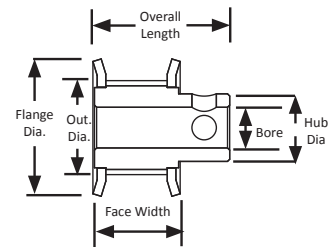


Part Number	No. of Teeth	Type	Pitch Dia. (in)	Out. Dia. (in)	Flange Dia. (in)	Bore (in)	Face Width (in)	Overall Length (in)	Hub Dia. (in)	Set Screw
16-3P09-6CA2	16	6C	0.602	0.572	0.710	0.188	0.453	0.691	0.710	2 x 6-40 @ 90°
16-3P09-6CA3	16	6C	0.602	0.572	0.710	0.250	0.453	0.691	0.710	2 x 6-40 @ 90°
17-3P09-6CA2	17	6C	0.639	0.609	0.740	0.188	0.453	0.691	0.740	2 x 6-40 @ 90°
18-3P09-6FA2	18	6F	0.677	0.647	0.790	0.188	0.506	0.812	0.442	2 x 4-40 @ 90°
18-3P09-6FA3	18	6F	0.677	0.647	0.790	0.250	0.506	0.812	0.442	2 x 8-32 @ 90°
19-3P09-6FA2	19	6F	0.714	0.684	0.815	0.188	0.506	0.812	0.468	2 x 4-40 @ 90°
19-3P09-6FA3	19	6F	0.714	0.684	0.815	0.250	0.506	0.812	0.468	2 x 8-32 @ 90°
20-3P09-6FA2	20	6F	0.752	0.722	0.895	0.188	0.506	0.812	0.500	2 x 4-40 @ 90°
20-3P09-6FA3	20	6F	0.752	0.722	0.895	0.250	0.506	0.812	0.500	2 x 8-32 @ 90°
21-3P09-6FA2	21	6F	0.790	0.760	0.895	0.188	0.506	0.812	0.500	2 x 4-40 @ 90°
21-3P09-6FA3	21	6F	0.790	0.760	0.895	0.250	0.506	0.812	0.500	2 x 8-32 @ 90°
22-3P09-6FA2	22	6F	0.827	0.797	0.945	0.188	0.506	0.812	0.562	2 x 4-40 @ 90°
22-3P09-6FA3	22	6F	0.827	0.797	0.945	0.250	0.506	0.812	0.562	2 x 8-32 @ 90°
24-3P09-6FA3	24	6F	0.902	0.872	1.025	0.250	0.506	0.812	0.625	2 x 8-32 @ 90°
25-3P09-6FA3	25	6F	0.940	0.910	1.060	0.250	0.506	0.812	0.625	2 x 8-32 @ 90°
26-3P09-6FA3	26	6F	0.977	0.947	1.105	0.250	0.506	0.812	0.625	2 x 8-32 @ 90°
28-3P09-6FA3	28	6F	1.053	1.023	1.173	0.250	0.506	0.812	0.701	2 x 8-32 @ 90°
28-3P09-6FA5	28	6F	1.053	1.023	1.173	0.375	0.506	0.812	0.701	2 x 8-32 @ 90°
30-3P09-6FA3	30	6F	1.128	1.098	1.250	0.250	0.506	0.812	0.776	2 x 8-32 @ 90°
30-3P09-6FA5	30	6F	1.128	1.098	1.250	0.375	0.506	0.812	0.776	2 x 8-32 @ 90°
30-3P09-6FA6	30	6F	1.128	1.098	1.250	0.500	0.506	0.812	0.776	2 x 8-32 @ 90°
32-3P09-6FA3	32	6F	1.203	1.173	1.323	0.250	0.506	0.812	0.851	2 x 8-32 @ 90°
34-3P09-6FA3	34	6F	1.278	1.248	1.398	0.250	0.527	0.833	0.921	2 x 8-32 @ 90°
36-3P09-6FA3	36	6F	1.353	1.323	1.473	0.250	0.527	0.833	1.000	2 x 8-32 @ 90°
38-3P09-6FA3	38	6F	1.429	1.399	1.549	0.250	0.527	0.833	1.075	2 x 8-32 @ 90°
40-3P09-6FA3	40	6F	1.504	1.474	1.625	0.250	0.527	0.833	1.150	2 x 8-32 @ 90°
44-3P09-6FA3	44	6F	1.654	1.624	1.775	0.250	0.527	0.833	1.300	2 x 8-32 @ 90°
45-3P09-6FA3	45	6F	1.692	1.662	1.775	0.250	0.527	0.833	1.250	2 x 8-32 @ 90°

TYPE 6C



TYPE 6F



For idler pulleys,
see page 366.